

DEPARTMENT OF THE ARMY TECHNICAL MANUAL

ORGANIZATIONAL MAINTENANCE REPAIR PARTS AND  
SPECIAL TOOLS LIST FOR  
TEST SET, GYRO STABILIZED PLATFORM AN/ASM-385

Headquarters, Department of the Army, Washington, D. C.

17 August 1971

TABLE OF CONTENTS

	Paragraph	Page
<b>SECTION I. INTRODUCTION</b>		
Scope .....	1-1	1-1
General .....	1-2	1-1
Explanation of Columns .....	1-3	1-1
Special Information .....	1-4	1-3
How to Locate Repair Parts .....	1-5	1-3
Abbreviations (Not Applicable) .....		1-4
Federal Supply Codes for Manufacturers .....	1-6	1-4
Recommendations for Maintenance Publication Improvements .....	1-8	1-4
<b>SECTION II. PRESCRIBED LOAD ALLOWANCE .....</b>		2-1
<b>SECTION III. REPAIR PARTS FOR ORGANIZATIONAL MAINTENANCE .....</b>		3-1
<b>SECTION IV. SPECIAL TOOLS, TEST AND SUPPORT EQUIPMENT FOR ORGANIZATIONAL MAINTENANCE (Not Applicable) .....</b>		4-1
<b>SECTION V. INDICES</b>		
Federal Stock Number Cross Reference to Index Number .....		5-1
Reference Number Cross-Reference to Figure and Item Number .....		5-2
Reference Designation Cross Reference to Index Number .....		5-3
Federal Stock Number Cross-Reference to Figure and Item Number .....		5-4
Figure and Item Number Cross Reference to Index Number .....		5-6

LIST OF ILLUSTRATIONS

Number	Title	Page
1	Test Set, Gyro Stabilized Platform AN/ASM-385 .....	3-4
2	Control-Display Unit C-8316/ASJ .....	3-5
3	Control-Display Unit Subassembly .....	3-6
4	Switching Unit TS-2907/ASM-385 .....	3-7
5	Electronics Unit Subassembly .....	3-8

**SECTION I. INTRODUCTION**

**1-1. Scope.**

This manual lists repair parts and special tools required for the performance of organizational maintenance of the Test Set, Gyro Stabilized Platform AN/ASM-385.

**1-2. General.**

This Repair Parts and Special Tools List is divided into the following sections:

Prescribed Load Allowance (PLA) - Section II. A composite listing of the repair parts, special tools, test and support equipment having quantitative allowances for initial stockage at the organizational level.

b. Repair Parts - Section III. A list of repair Parts authorized for the performance of maintenance at the organizational level in index number sequence.

c. Special Tools, Test and Support Equipment - Section IV. Not applicable.

d. Indices - Section V. Conversion of numbers and indices is explained as follows:

(1) Index - Federal Stock Number to Index Number. A list of Federal Stock numbers, in ascending numerical sequence, cross-referenced to the Repair Parts list index number.

(2) Index - Reference Number to Figure and Item Number. A list of reference numbers (part numbers and manufacturers codes), in ascending alphanumeric sequence, cross-referenced to figure and item number.

(3) Index - Reference Designation to Index Number. A list of Reference Designations (RD), in ascending alphanumeric sequence, cross-referenced to the Repair Parts list index number.

(4) Index - Federal Stock Number to Figure and Item Number. A list of Federal stock numbers, in ascending numerical sequence, cross-referenced to the illustration figure number and item number.

(5) Index — Figure and Item Number to Index Number. A list of figure and item numbers, each in ascending numerical sequence, cross-referenced to the Repair Parts list index numbers.

**1-3. Explanation of Columns.**

The following provides an explanation of columns in the tabular lists in Sections III and IV.

a. Source, Maintenance, and Recoverability (SMR) Codes, Column 1:

(i. Source code, indicates the selection status and source for the listed item. Source codes are

Code	Explanation
A	Applies to assemblies which are not procured or stocked as such but are made up of two or more units, each of which carry individual stock numbers and descriptions and are procured and stocked and can be assembled by units at indicated maintenance categories
AH	Applies to repair parts requiring assembly at a category higher than that authorized to replace the part
G	Applies to major assemblies that are procured with Procurement of Electronic and Missile, Army (PEMA) funds for initial issue only to be used as exchange assemblies at Direct Support Unit (DSU) and General Support Unit (GSU) level. These assemblies will not be stocked above DSU and GSU level or returned to depot level
P	Applies to repair parts which are stocked in or supplied from General Support Activity/Direct Support Activity (GSA/DSA), or Army supply system, and authorized for use at indicated maintenance categories

(2) **Maintenance code**, indicates the lowest category of maintenance authorized to install the listed item. The maintenance level is:

Code	Explanation
0	Organizational maintenance

(3) **Recoverability code**, indicates whether unserviceable items should be returned for recovery or salvage. Items not coded are expendable. Recoverability codes are:

Code	Explanation
R	Applies to repair parts and assemblies which are economically repairable at DSU and GSU activities and normally are furnished by supply on an exchange basis
T	Applies to high dollar value recoverable repair parts which are subject to special handling and are issued on an exchange basis. Such repair parts normally are repaired or overhauled at depot maintenance

b. The second line of column 1 is a cross-reference to the index number of the repair part it appears in the Selection Work Sheet.

c. **Federal Stock Number, Column 2.** This column indicates the Federal stock number assigned to the item and will be used for requisitioning purposes.

d. **Description, Column 3.** This column indicates the Federal item name of the item required. A part number or other reference number is followed by the applicable five-digit Federal supply code for manufacturers.

e. **Unit of Measure (U/M), Column 4.** A two-character alphabetic abbreviation indicating the amount or quantity of the item upon which the allowances are based; e.g., EA (each).

f. **Quantity Incorporated in Unit, Column 5.** This column indicates the quantity of the item used in any one assembly. An "AR" appearing in this column in lieu of a quantity indicates that a definite quantity cannot be indicated; e. g. , shims, spacers, etc.

g. **15-Day Organizational Maintenance Allowance, Column 3 of Section II and Column 6 of Section III and IV.**

(1) The allowance columns are divided into four subcolumns. Indicated in each subcolumn opposite the first appearance of each item is the total quantity of items authorized for the number of equipments supported. Subsequent appearances of the same item will have the letters "REF" in the allowance columns. Items authorized for use as required but not for initial stockage are identified with an asterisk in the allowance column.

(2) The quantitative allowances for organizational level of maintenance represents one initial prescribed load for a 15-day period for the number of equipments supported. Units and organizations authorized additional prescribed loads will multiply the number of prescribed loads authorized by the quantity of repair Parts reflected in the density column applicable to the number of items supported to obtain the total quantity of repair parts authorized.

(3) Organizational units providing maintenance for more than 100 of these equipments shall determine the total quantity of parts required by converting the equipment quantity to a decimal factor by placing a decimal point before the next to last digit of the number to indicate hundredths, and multiplying the decimal factor by the Parts quantity authorized in the 51-100 allowance column. **Example, authorized allowance for 51-100 equipments is 40; for 150 equipments multiply 40 by 1.50 or 60 parts required.**

(4) **Subsequent changes to allowances will be limited as follows: No change in the range of items is authorized. If additional items are considered necessary, recommendation should be forwarded to Commanding Officer, U. S. Army Electronics Command, ATTN: AMSEL-ME-NMP-AS, Fort Monmouth, New Jersey 07703 for exception or revision to the allowance list. Revisions to the range of items authorized will be made by the Commanding Officer, U. S. Army Electronics Command, ATTN: AMSEL-ME-NMP-AS, Fort Monmouth, New Jersey 07703 based upon engineering experience, demand data, or TAERS information.**

h. **Illustration, Column 7.** This column indicates the figure number of the illustration in which the item is shown, and the number used to reference the item in the illustration.

i. Reference Designation, Column 8. This column indicates the reference designation symbol of each item in the equipment.

1-4. Special Information.

a. Repair parts mortality has been based on 100 equipments operating 65 hours a month for 1 year.

b. The basis of issue for authorized special tools, test and support equipment is the number of end items of equipment supported and the number of maintenance personnel allocated to perform the required maintenance operations as follows: Two sets of Special Tools and Test Equipment supporting twenty-three AN/ASN-86 Inertial Navigation Sets.

The following publications pertain to Test Set, Gyro Stabilized Platform AN/ASM-385 and its components.

TM 11-6625-2440-12	Operator's and Organizational Maintenance Manual for Test Set, Gyro Stabilized Platform AN/ASM-385
TM 11-6625-2440-45	General Support and Depot Maintenance Manual for Test Set, Gyro Stabilized Platform AN/ASM-385
TM 11-6625-2440-45P	General Support and Depot Maintenance Repair Parts and Special Tools List for Test Set, Gyro Stabilized Platform AN/ASM-385

1-5. How to Locate Repair Parts.

a. When the Federal stock number or reference number is unknown

(1) First. Using the List of Illustrations, determine the assembly within which the repair part belongs.

(2) Second. Find the illustration covering the assembly to which the repair part belongs.

(3) Third. Identify the repair part on the illustration and note the figure and item number of the repair part.

(4) Fourth. Using the Figure and Item Number Index, locate the sequence index number of the repair part.

(5) Fifth. Refer to the sequence index number in the Repair Parts list for the Federal stock number or reference number.

b. When the Federal stock number or reference number is known:

(1) First. Using either of the indices of Federal Stock Numbers, find the Federal stock number. These indices are in ascending numerical sequence by Federal stock number, cross-referenced to either the Repair Parts list index number or to the illustration figure and item number.

(a) Second. Using the Index of Reference Numbers, find the applicable number. This index is in ascending alphanumeric sequence by reference number, cross-referenced to the Repair Parts list index number.

(3) Third. Using the Repair Parts list, find the assembly of the repair part and the illustration figure and item number, or the index number, as referenced in the indices of Federal Stock Numbers or Reference Numbers.

c. When the RD is known:

(1) First. Using the Reference Designation Index, find the RD. This index is in ascending alphanumeric sequence, cross-referenced to the index number of the Repair Parts list. The next higher assembly of any component may be determined by using the RD Index. Identify the RD of the part in question and, by following the upward progression of this index, the sequence number of the next higher assembly part number may be identified. The RD is compiled as follows:

<b>1</b>	<b>A1</b>	<b>A1</b>	<b>MPI</b>
Unit No.	Assembly Letter and No.	Subassembly Letter and No.	Component Letter and No.

(2) Second. Using the Repair Parts list, find the assembly of the repair part and the illustration figure and item number.

d. When the Figure and Item Number are known:

(1) First. Identify the repair part on the applicable figure.

(2) Second. Cross-reference to the individual indices for information required.

1-6. Abbreviations. Not applicable.

1-7. Federal Supply Codes for Manufacturers.

Code	Manufacturer
06481	Litton Systems, Inc, Guidance and Control Systems Div. 5500 Canoga Ave. Woodland Hills, Calif. 91364
71744	Chicago Miniature Lamp Works 4433 Ravenswood Ave. Chicago, ILL. 60640
87034	Marco & Oak Industries A Division of Oak Electro/Metics Corp. 207 S. Helena P.O. Box 4011 Anaheim, Calif. 92803
96906	Military Standards Promulgated by Standardization Div. Directorate of Logistics Services, DSA

1-8. Recommendations for Maintenance Publication Improvements.

Report of errors, omissions, and recommendations for improving this publication by the individual user is encouraged. Reports should be submitted on DA Form 2028 (Recommended Changes to DA Publications) and forwarded direct to Commanding General, U.S. Army Electronics Command, Attn: AMSEL-ME-NMP-AS, Fort Monmouth, New Jersey 07703.

SECTION II. PRESCRIBED LOAD ALLOWANCE

(1) FEDERAL STOCK NUMBER	DESCRIPTION	USABLE ON CODE	(3) 15-DAY ORGANIZATIONAL MAINTENANCE ALLOWANCE			
			(a) 1-5	(b) 6-20	(c) 21-50	(d) 51-100
INDEX NUMBERS ARE INCLUDED TO FACILITATE CROSS-REFERENCING						
5355-751-7597	KNOB, CONTROL //INDEX NUMBER A4961		•	•	2	2
6210	LENS, INDICATOR LIGHT INDEX NUMBER A520/		•	•	2	2
6210	LENS, INDICATOR LIGHT INDEX NUMBER A520A/		•	•	2	2
6240-132-4011	LAMP, INCANDESCENT //INDEX NUMBER A497/		2	5	13	25
6240-155-7836	LAMP, INCANDESCENT //INDEX NUMBER A502/		6	21	48	91
6625	CIRCUIT CARD ASSEMBLY //INDEX NUMBER A244/		•	•	•	1
6625	CIRCUIT CARD ASSEMBLY //INDEX NUMBER A304/		•	•	•	1
6625	CIRCUIT CARD ASSEMBLY //INDEX NUMBER A331/		•	•	•	1
6625	CIRCUIT CARD ASSEMBLY //INDEX NUMBER A368/		•	•	•	1
6625	CIRCUIT CARD ASSEMBLY //INDEX NUMBER B151/		•	•	•	1
6625	CIRCUIT CARD ASSEMBLY //INDEX NUMBER B174/		•	•	•	1
6625	CIRCUIT CARD ASSEMBLY //INDEX NUMBER B222/		•	•	•	1
6625	CIRCUIT CARD ASSEMBLY INDEX NUMBER B250/		•	•	2	2
6625	CIRCUIT CARD ASSEMBLY //INDEX NUMBER B35B/		•	•	•	1
6625	CIRCUIT CARD ASSEMBLY //INDEX NUMBER B390/		•	•	•	1
6625	CIRCUIT CARD ASSEMBLY //INDEX NUMBER B411/		•	•	•	1
6625	CIRCUIT CARD ASSEMBLY //INDEX NUMBER B431/		•	•	•	1
6625	CIRCUIT CARD ASSEMBLY //INDEX NUMBER B481/		•	•	•	1
6625	CIRCUIT CARD ASSEMBLY //INDEX NUMBER B516/		•	•	•	1
6625	CIRCUIT CARD ASSEMBLY //INDEX NUMBER B551/		•	•	•	1
6625	CIRCUIT CARD ASSEMBLY //INDEX NUMBER B572/		•	•	2	2

---

SECTION III. REPAIR PARTS FOR ORGANIZATIONAL MAINTENANCE

(1) SMR CODE INDEX NO.	(2) FEDERAL STOCK NUMBER	(3) DESCRIPTION REFERENCE NUMBER & MFR. CODE	(4) UNIT OF MEAS.	(5) QTY IN UNIT	(6) 15-DAY ORGANIZATIONAL MAINTENANCE ALLOW				(7) ILLUSTRATIONS FIGURE & ITEM NO.	(8) REFERENCE DESIGNATION
					(a)	(b)	(c)	(d)		
					1-5	6-20	21-50	51-100		
G O R A001	6625-404-3281	TEST SET, GYRO STABILIZED PLATFORM AN/ASM-385 247109 (06481)	EA	1					1 - 1	
G O R A002	6625-234-6151	CONTROL-DISPLAY UNIT C-8316/ASN-385 247350 (06481)	EA	1					1 - 2	1
AH O R A003	6625-245-1739	CABLE ASSEMBLY, POWER, ELECTRICAL CX-12107/U 244740 (06481)	EA	1					2 - 1	1W1
AH O R A018	5995	CABLE ASSEMBLY, POWER, ELECTRICAL CX-12108/U 244741 (06481)	EA	1					2 - 2	1W2
AH O R A036	6625-234-6153	CABLE ASSEMBLY, SPECIAL PURPOSE, ELECTRICAL CX-12114/U 247342 (06481)	EA	1					2 - 3	1W2
AH O R A051	6625-463-4891	CABLE ASSEMBLY, SPECIAL PURPOSE, ELECTRICAL CX-12115/U 247344 (06481)	EA	1					2 - 4	1W4
AH O R A069	6625-234-6157	CABLE ASSEMBLY, SPECIAL PURPOSE, ELECTRICAL CX-12116/U 247345 (06481)	EA	1					2 - 5	1W9
AH O R A088	6625-245-1745	CABLE ASSEMBLY, SPECIAL PURPOSE, ELECTRICAL CX-12117/U 247346 (06481)	EA	1					2 - 6	1W11
AH O R A115	6625-411-5836	CABLE ASSEMBLY, SPECIAL PURPOSE, ELECTRICAL CX-12118/U 247347 (06481)	EA	1					2 - 7	1W12
A O R A149	6625	CONTROL-DISPLAY UNIT SUBASSEMBLY 247351 (06481)	EA	1					2 - 8	1A1
AH O R A170	6625	CAGE ASSEMBLY, CIRCUIT CARD 247383 (06481)	EA	1					3 - 31	1A1MP3
P O T A244	6625	CIRCUIT CARD ASSEMBLY 247354 (06481)	EA	1	*	*	*	1	3 - 27	1A1A1
P O T A304	6625	CIRCUIT CARD ASSEMBLY 247359 (06481)	EA	1	*	*	*	1	3 - 30	1A1A4
P O T A331	6625	CIRCUIT CARD ASSEMBLY 247364 (06481)	EA	1	*	*	*	1	3 - 28	1A1A2
P O T A368	6625	CIRCUIT CARD ASSEMBLY 247373 (06481)	EA	1	*	*	*	1	3 - 29	1A1A3
P O A496	5355-751-7597	KNOB, CONTROL HS91528-1828 (96906)	EA	1	*	*	2	2	3 - 26	1A1MP12
P O A497A	6240-132-4011	LAMP, INCANDESCENT CM8-783 (71744)	EA	5	2	5	13	25	3 - 20	1A1DS16
P O A498A	6240-132-4011	LAMP, INCANDESCENT CM8-783 (71744)	EA	REF	REF	REF	REF	REF	3 - 21	1A1DS17
P O A499A	6240-132-4011	LAMP, INCANDESCENT CM8-783 (71744)	EA	REF	REF	REF	REF	REF	3 - 22	1A1DS18
P O A500A	6240-132-4011	LAMP, INCANDESCENT CM8-783 (71744)	EA	REF	REF	REF	REF	REF	3 - 23	1A1DS19
P O A501A	6240-132-4011	LAMP, INCANDESCENT CM8-783 (71744)	EA	REF	REF	REF	REF	REF	3 - 24	1A1DS20
P O A502	6240-155-7836	LAMP, INCANDESCENT HS25237-327 (96906)	EA	18	6	21	48	91	3 - 1	1A1DS21
P O A503	6240-155-7836	LAMP, INCANDESCENT HS25237-327 (96906)	EA	REF	REF	REF	REF	REF	3 - 2	1A1DS27

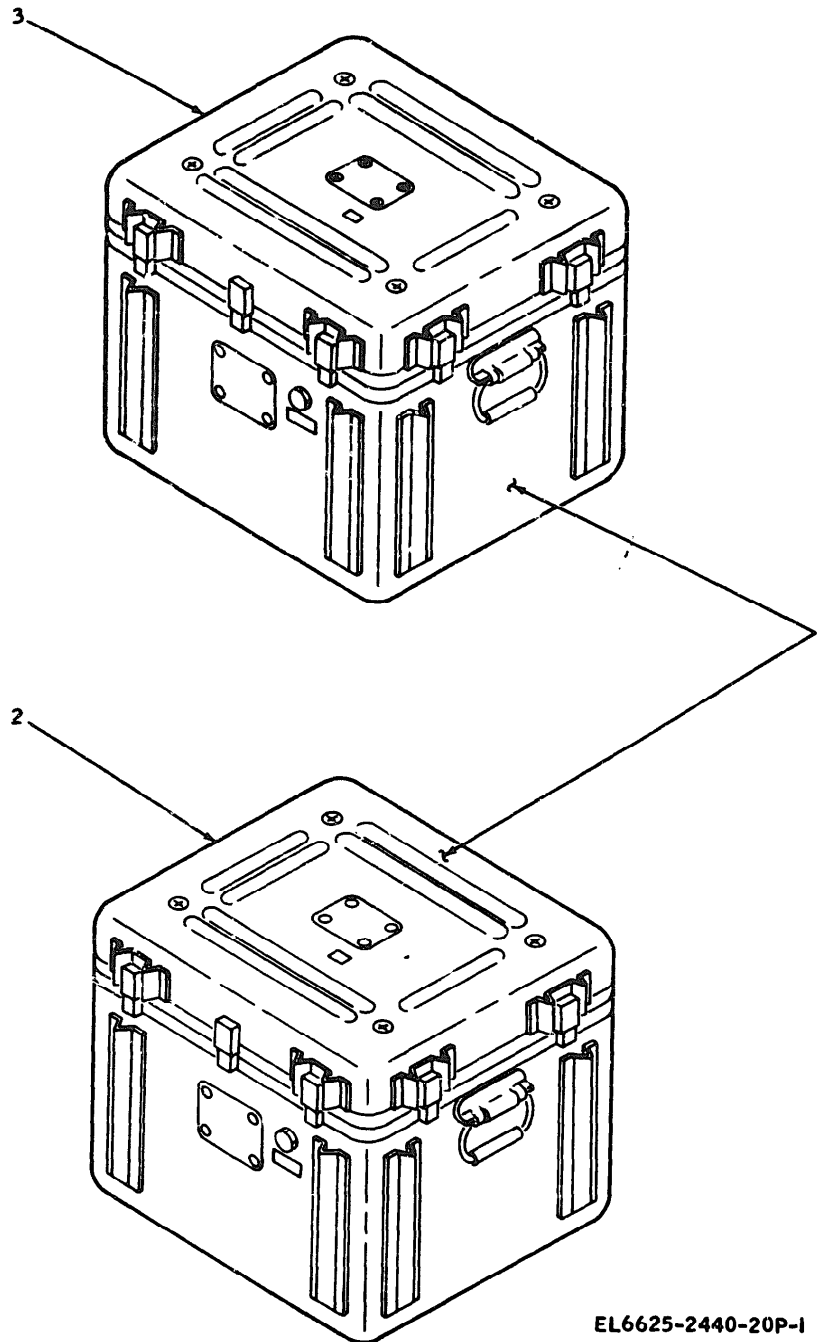


SECTION III REPAIR PARTS FOR ORGANIZATIONAL MAINTENANCE (Continued)

(1) NSM CODE INDEX NO.	(2) FEDERAL STOCK NUMBER	(3) DESCRIPTION REFERENCE NUMBER & MFR. CODE	(4) UNIT OF MEAS.	(5) QTY INC IN UNIT	(6) 15-DAY ORGANIZATIONAL MAINTENANCE ALLOW				(7) ILLUSTRATIONS FIGURE & ITEM NO.	(8) REFERENCE DESIGNATION
					(a) 1-5	(b) 6-20	(c) 21-50	(d) 51-100		
P O A504	6240-155-7836	LAMP, INCANDESCENT MS25237-327 (96906)	EA	REF	REF	REF	REF	REF	3 - 3	1A1DS23
P O A505	6240-155-7836	LAMP, INCANDESCENT MS25237-327 (96906)	EA	REF	REF	REF	REF	REF	3 - 4	1A1DS24
P O A506	6240-155-7836	LAMP, INCANDESCENT MS25237-327 (96906)	EA	REF	REF	REF	REF	REF	3 - 5	1A1DS25
P O A507	6240-155-7836	LAMP, INCANDESCENT MS25237-327 (96906)	EA	REF	REF	REF	REF	REF	3 - 6	1A1DS26
P O A508	6240-155-7836	LAMP, INCANDESCENT MS25237-327 (96906)	EA	REF	REF	REF	REF	REF	3 - 7	1A1DS27
P O A509	6240-155-7836	LAMP, INCANDESCENT MS25237-327 (96906)	EA	REF	REF	REF	REF	REF	3 - 8	1A1DS28
P O A510	6240-155-7836	LAMP, INCANDESCENT MS25237-327 (96906)	EA	REF	REF	REF	REF	REF	3 - 9	1A1DS29
P O A511	6240-155-7836	LAMP, INCANDESCENT MS25237-327 (96906)	EA	REF	REF	REF	REF	REF	3 - 10	1A1DS30
P O A512	6240-155-7836	LAMP, INCANDESCENT MS25237-327 (96906)	EA	REF	REF	REF	REF	REF	3 - 11	1A1DS31
P O A513	6240-155-7836	LAMP, INCANDESCENT MS25237-327 (96906)	EA	REF	REF	REF	REF	REF	3 - 12	1A1DS32
P O A514	6240-155-7836	LAMP, INCANDESCENT MS25237-327 (96906)	EA	REF	REF	REF	REF	REF	3 - 13	1A1DS33
P O A515	6240-155-7836	LAMP, INCANDESCENT MS25237-327 (96906)	EA	REF	REF	REF	REF	REF	3 - 14	1A1DS34
P O A516	6240-155-7836	LAMP, INCANDESCENT MS25237-327 (96906)	EA	REF	REF	REF	REF	REF	3 - 15	1A1DS35
P O A517	6240-155-7836	LAMP, INCANDESCENT MS25237-327 (96906)	EA	REF	REF	REF	REF	REF	3 - 16	1A1DS36
P O A518	6240-155-7836	LAMP, INCANDESCENT MS25237-327 (96906)	EA	REF	REF	REF	REF	REF	3 - 17	1A1DS37
P O A519	6240-155-7836	LAMP, INCANDESCENT MS25237-327 (96906)	EA	REF	REF	REF	REF	REF	3 - 18	1A1DS38
P O A520	6210	LENS, INDICATOR LIGHT SP45TL (87034)	EA	2	*	*	2	2	3 - 19	1A1MP13
P O A520A	6210	LENS, INDICATOR LIGHT 17P45 (87034)	EA	5	*	*	2	2	3 - 25	1A1MP18
G O T A559	6625	POWER SUPPLY 247640 (06481)	EA	1					3 - 32	1A1PS1
G U R A845	6625-411-5838	SWITCHING UNIT TS-2907/ASH-385 247310 (06481)	EA	1					1 - 3	2
AH O R A846	6625-245-1736	CABLE ASSEMBLY, SPECIAL PURPOSE, ELECTRICAL CX-12109/U 244744 (06481)	EA	1					4 - 1	2W5
AH O R A865	6625-245-1735	CABLE ASSEMBLY, SPECIAL PURPOSE, ELECTRICAL CX-12110/U 244745 (06481)	EA	1					4 - 2	2W6
AH O R A880	6625-245-1737	CABLE ASSEMBLY, SPECIAL PURPOSE, ELECTRICAL CX-12111/U 244746 (06481)	EA	1					4 - 3	2W7
AH O R A907	6625-245-1850	CABLE ASSEMBLY, SPECIAL PURPOSE, ELECTRICAL CX-12112/U 244747 (06481)	EA	1					4 - 4	2W8

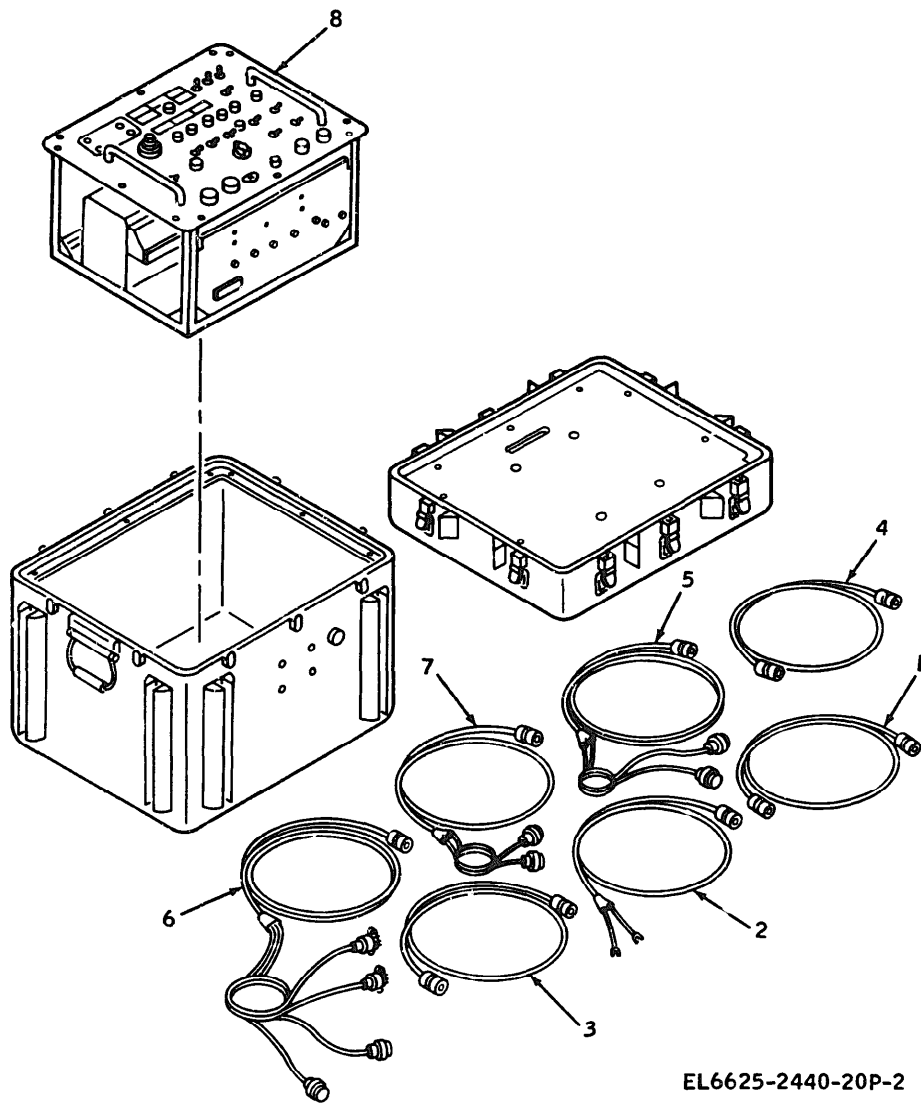
SECTION III, REPAIR PARTS FOR ORGANIZATIONAL MAINTENANCE (continued)

(1) SMR CODE INDEX NO.	(2) FEDERAL STOCK NUMBER	(3) DESCRIPTION REFERENCE NUMBER & MFR. CODE	(4) UNIT OF MEAS.	(5) QTY INC IN UNIT	(6) 15-DAY ORGANIZATIONAL MAINTENANCE ALW				(7) ILLUSTRATIONS FIGURE & ITEM NO.	(8) REFERENCE DESIGNATION
					(1) 1-5	(2) 6-20	(3) 21-50	(4) 51-100		
AH O A926	6625-410-9914	CABLE ASSEMBLY, SPECIAL PURPOSE, ELECTRICAL CX-12113/U 744749 (06481)	EA	1					4 - 5	2W10
AH O A946	6625-245-8471	CABLE ASSEMBLY, SPECIAL PURPOSE, ELECTRICAL CX-12119/U 247348 (06481)	EA	1					4 - 6	2W13
AH O A963	6625-245-8479	CABLE ASSEMBLY, SPECIAL PURPOSE, ELECTRICAL CX-12120/U 247349 (06481)	EA	1					4 - 7	2W14
A O A988	6625	ELECTRONICS UNIT S'ASSEMBLY 247311 (06481)	EA	1					4 - 9	2A1
P O B151	6625	CIRCUIT CARD ASSEMBLY 247300 (06481)	EA	1	*	*	*	1	5 - 15	2A1A15
P O B174	6625	CIRCUIT CARD ASSEMBLY 247305 (06481)	EA	1	*	*	*	1	5 - 2	2A1A2
P O B198	6625	CIRCUIT CARD ASSEMBLY 247305 (06481)	EA	1	REF	REF	REF	REF	5 - 3	2A1A3
P O B222	6625	CIRCUIT CARD ASSEMBLY 247314 (06481)	EA	1	*	*	*	1	5 - 1	2A1A1
P O B250	6625	CIRCUIT CARD ASSEMBLY 247321 (06481)	EA	1	*	*	2	2	5 - 12	2A1A12
P O B286	6625	CIRCUIT CARD ASSEMBLY 247321 (06481)	EA	1	REF	REF	REF	REF	5 - 13	2A1A13
P O B322	6625	CIRCUIT CARD ASSEMBLY 247321 (06481)	EA	1	REF	REF	REF	REF	5 - 14	2A1A14
P O B358	6625	CIRCUIT CARD ASSEMBLY 247326 (06481)	EA	1	*	*	*	1	5 - 8	2A1A8
P O B390	6625	CIRCUIT CARD ASSEMBLY 247331 (06481)	EA	1	*	*	*	1	5 - 4	2A1A4
P O B411	6625	CIRCUIT CARD ASSEMBLY 247336 (06481)	EA	1	*	*	*	1	5 - 9	2A1A9
P O B431	6625	CIRCUIT CARD ASSEMBLY 247460 (06481)	EA	1	*	*	*	1	5 - 17	2A1A17
P O B481	6625	CIRCUIT CARD ASSEMBLY 247470 (06481)	EA	1	*	*	*	1	5 - 16	2A1A16
P O B516	6625	CIRCUIT CARD ASSEMBLY 247475 (06481)	EA	1	*	*	*	1	5 - 10	2A1A10
P O B551	6625	CIRCUIT CARD ASSEMBLY 247480 (06481)	EA	1	*	*	*	1	5 - 11	2A1A11
P O B572	6625	CIRCUIT CARD ASSEMBLY 247485 (06481)	EA	1	*	*	2	2	5 - 5	2A1A5
P O B597	6625	CIRCUIT CARD ASSEMBLY 247485 (06481)	EA	1	REF	REF	REF	REF	5 - 6	2A1A6
P O B622	6625	CIRCUIT CARD ASSEMBLY 247485 (06481)	EA	1	REF	REF	REF	REF	5 - 7	2A1A7
P O B771	6625	KNOB, CONTROL MS91528-1028 (96906)	EA	5	REF	REF	REF	REF	4 - 8	2A1MP18



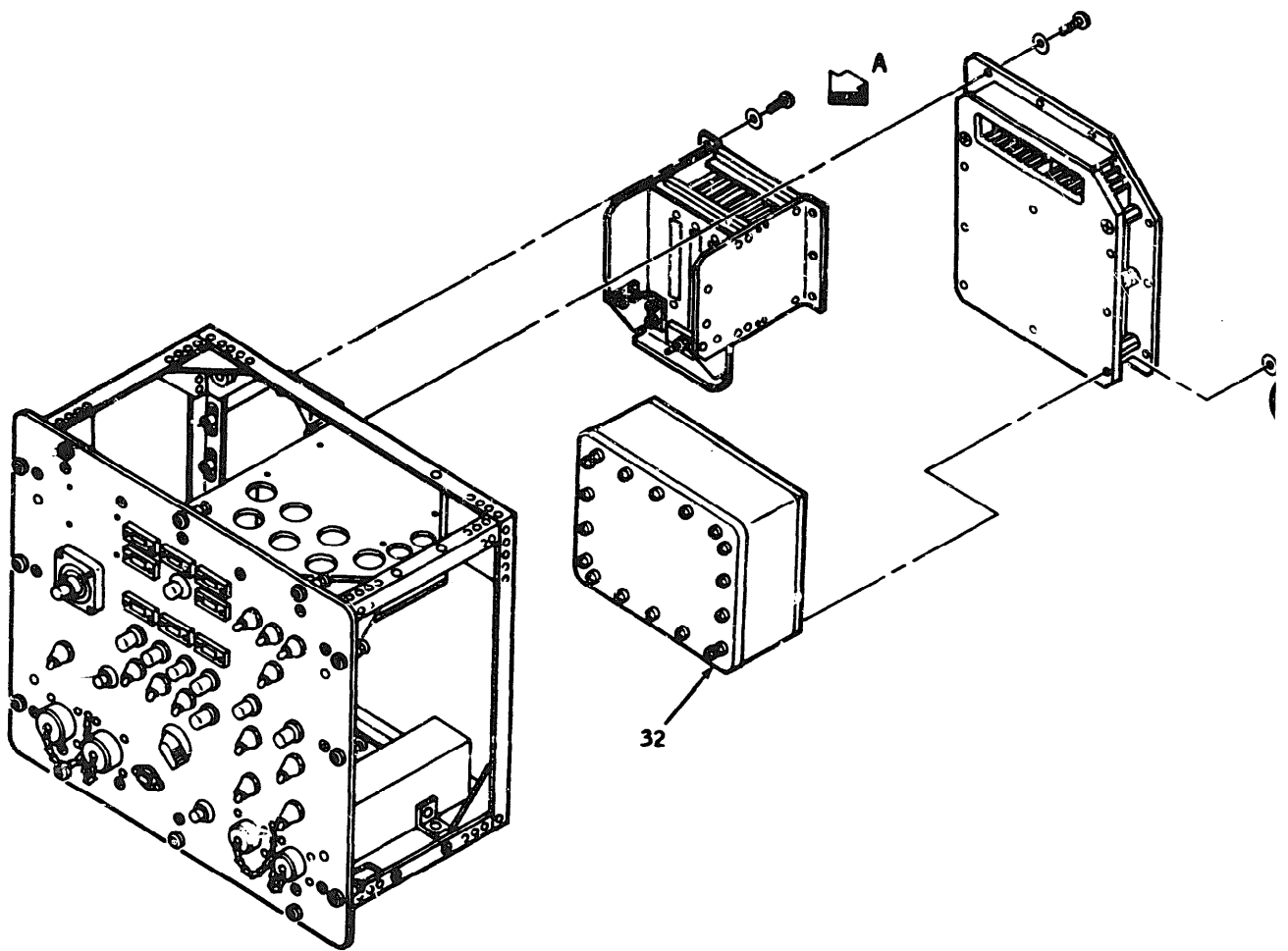
EL6625-2440-20P-I

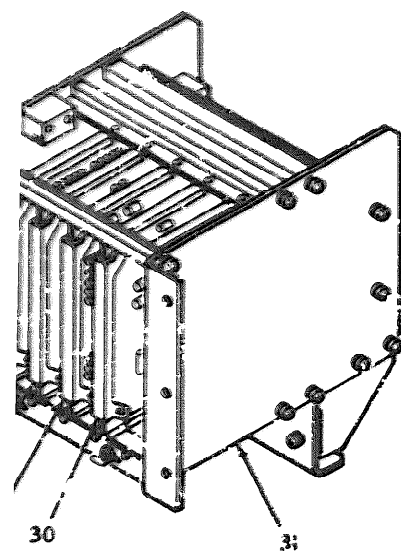
Figure 1. Test Set, Gyro Stabilized Platform AN/ASM-385



EL6625-2440-20P-2

Figure 2. Control-Display Unit C-8316/385





VIEW A  
ROTATED 180°

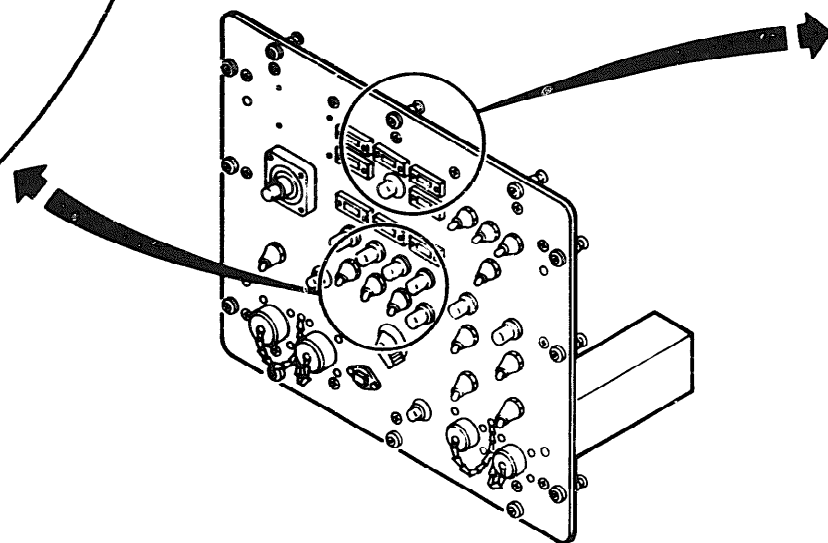
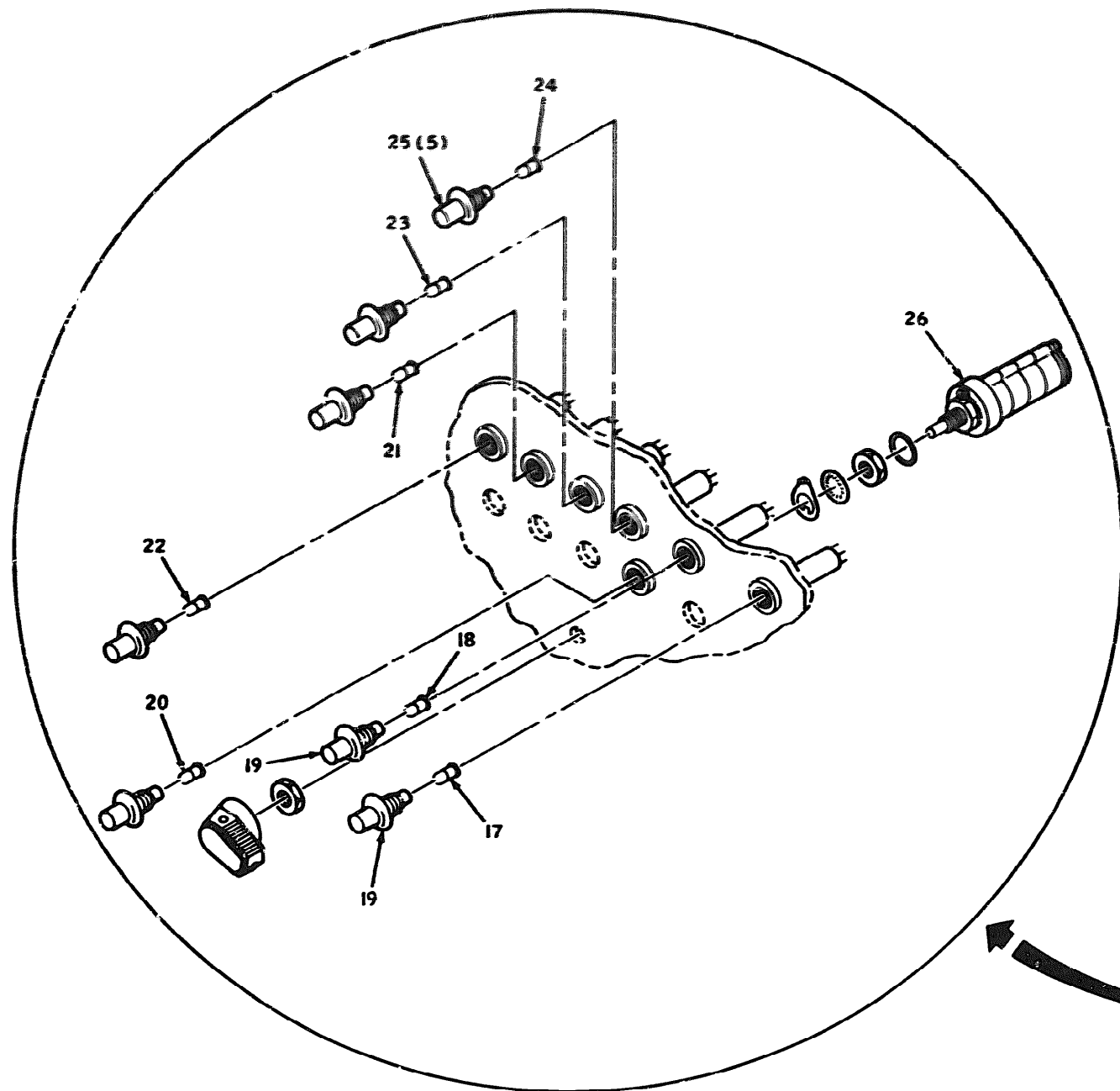
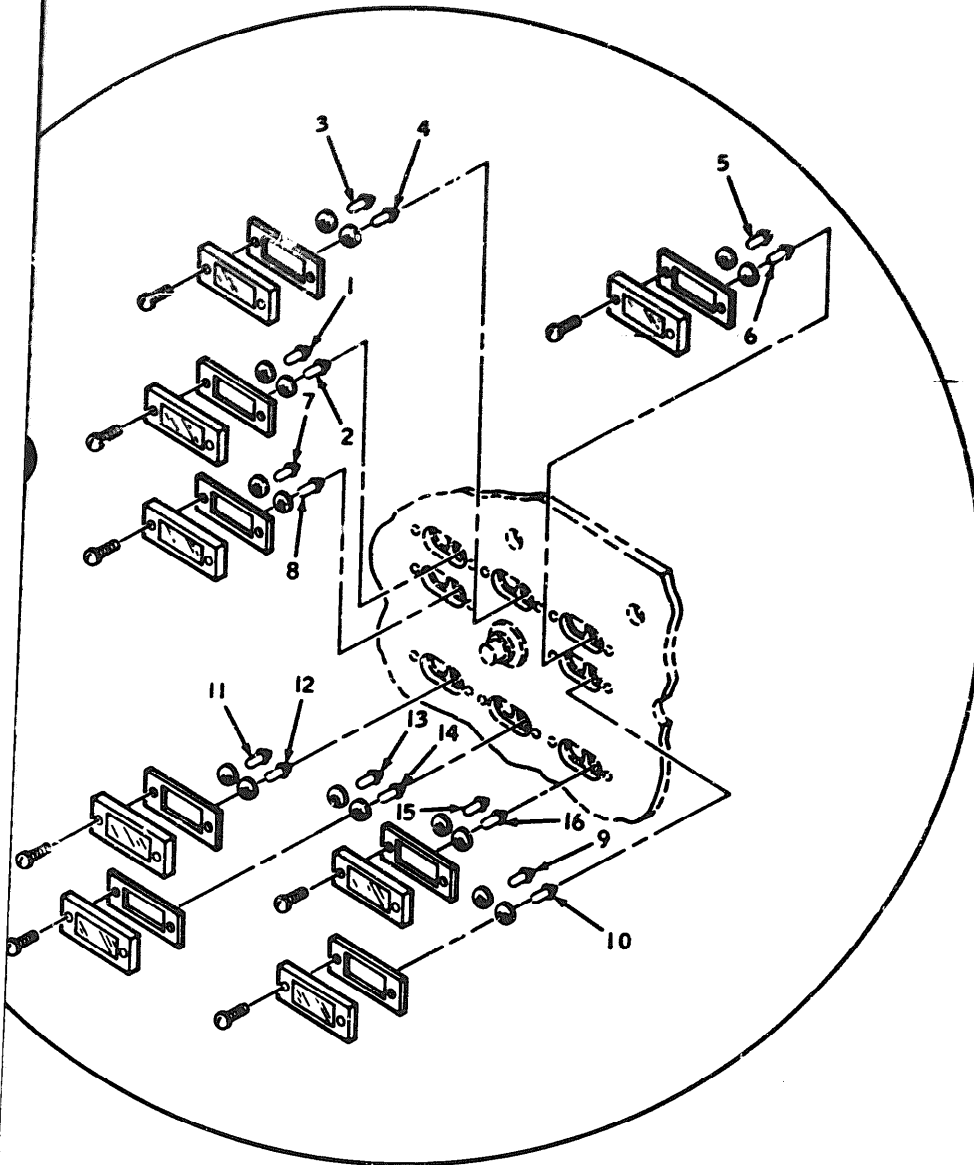
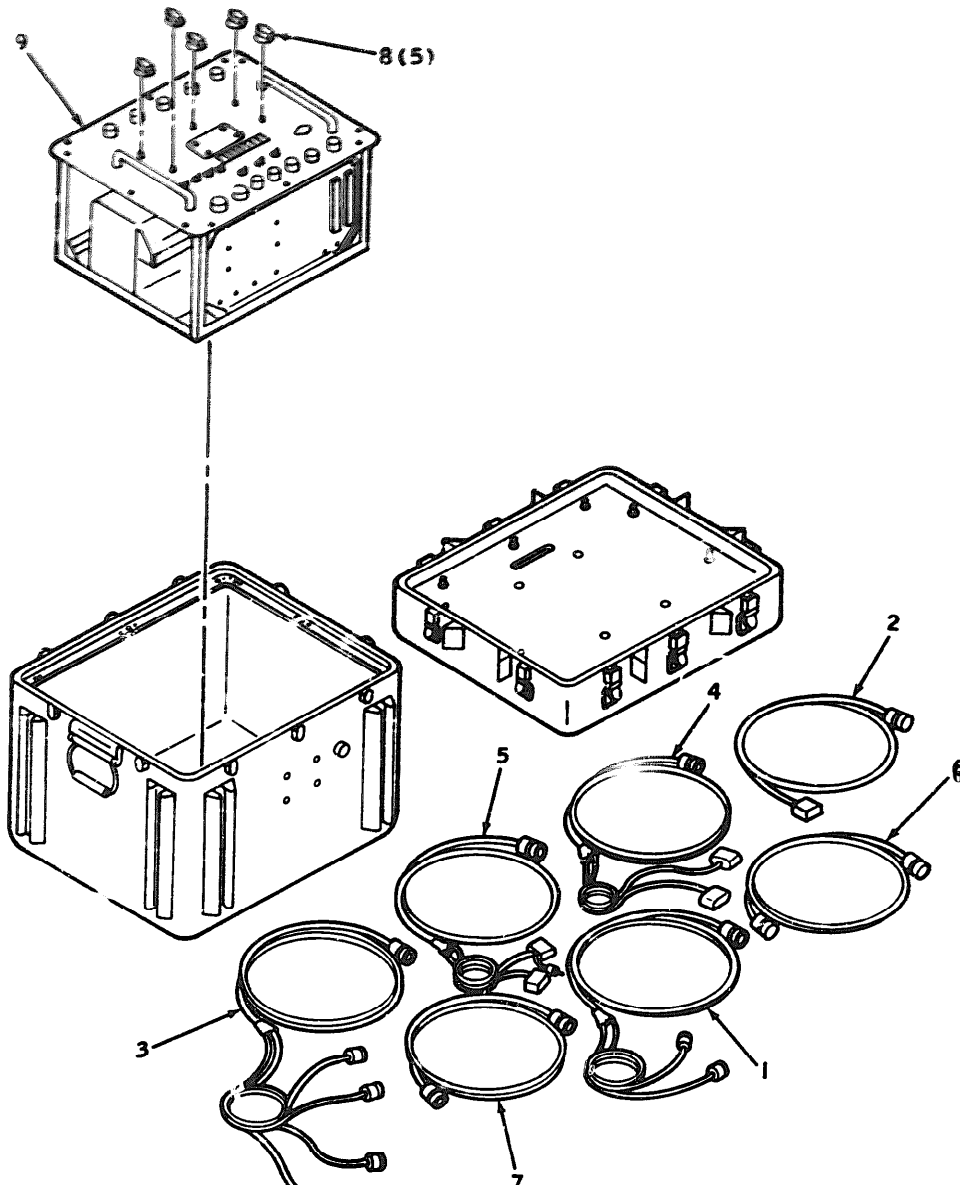


Figure 3. Control-Display Unit Subassembly



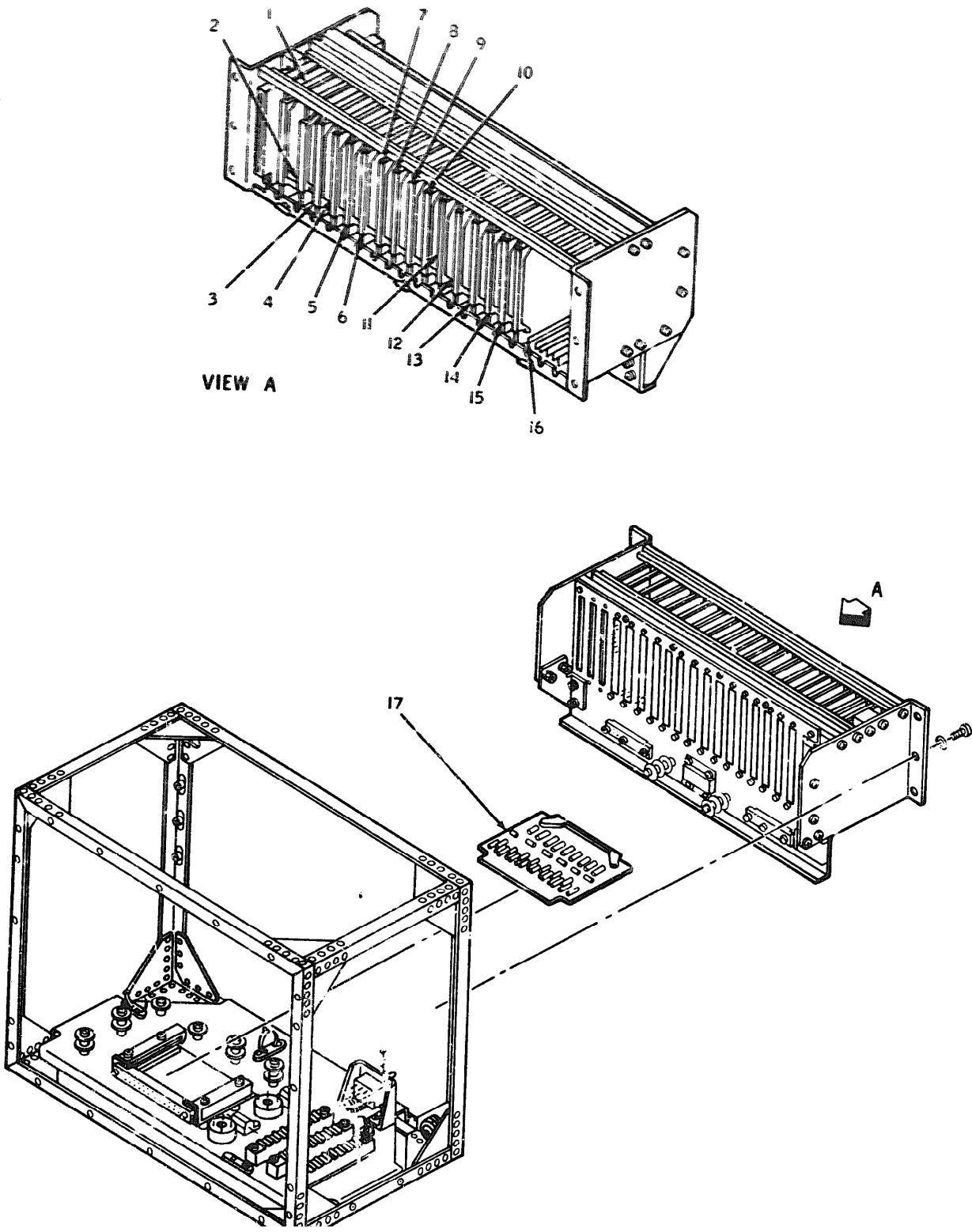
EL6625-2440-20P-3



EL6625-2440-20P-4

Figure 4. Switching Unit TS-2907/ASM-385





EL6625-2440-20P-5

Figure 5. Electronics Unit Subassembly

SECTION IV. SPECIAL TOOLS, TEST AND SUPPORT EQUIPMENT FOR ORGANIZATIONAL MAINTENANCE

(1) SMA CODE INDEX NO.	(2) FEDERAL STOCK NUMBER	(3) DESCRIPTION REFERENCE NUMBER & MFR. CODE	(4) USABLE OR CODE	(5) UNIT OF MEAS.	(6) QTY INC IN UNIT	(7) 15-DAY ORGANIZATIONAL MAINTENANCE ALG				(8) ILLUSTRATIONS FIGURE & ITEM NO.	(9) REFERENCE DESIGNATION
						(a) 1-5	(b) 6-20	(c) 21-50	(d) 51-100		
(NOT APPLICABLE)											

SECTION V. INDEX FEDERAL STOCK NUMBER CROSS-REFERENCE TO INDEX NUMBER

FEDERAL STOCK NUMBER	INDEX NO.	FEDERAL STOCK NUMBER	INDEX NO.	FEDERAL STOCK NUMBER	INDEX NO.
5355-750-7597	A496				
5355-751-7597	B771				
5295	A018				
6210	A520				
6210	A520A				
6240-132-4011	A497A				
6240-132-4011	A498A				
6240-132-4011	A499A				
6240-132-4011	A500A				
6240-132-4011	A501A				
6240-132-7830	A502				
6240-132-7830	A503				
6240-132-7830	A504				
6240-132-7830	A505				
6240-132-7830	A506				
6240-132-7830	A507				
6240-132-7830	A508				
6240-132-7830	A509				
6240-132-7830	A510				
6240-132-7830	A511				
6240-132-7830	A512				
6240-132-7830	A513				
6240-132-7830	A514				
6240-132-7830	A515				
6240-132-7830	A516				
6240-132-7830	A517				
6240-132-7830	A518				
6240-132-7830	A519				
6625	A149				
6625	A170				
6625	A244				
6625	A304				
6625	A331				
6625	A368				
6625	A559				
6625	A988				
6625	B151				
6625	B174				
6625	B198				
6625	B222				
6625	B250				
6625	B286				
6625	B322				
6625	B358				
6625	B390				
6625	B411				
6625	B431				
6625	B481				
6625	B516				
6625	B551				
6625	B572				
6625	B597				
6625	B622				
6625-234-6151	A002				
6625-234-6152	A036				
6625-234-6157	A069				
6625-245-1650	A907				
6625-245-1732	A865				
6625-245-1738	A846				
6625-245-1737	A880				
6625-245-1739	A003				
6625-245-1745	A088H				
6625-245-8479	A946				
6625-245-8479	A963				
6625-402-3281	A001				
6625-410-3914	A926				
6625-411-5836	A115				
6625-411-5838	A845				
6625-463-4891	A051				

SECTION V - REFERENCE NUMBER CROSS-REFERENCE TO FIGURE AND ITEM NUMBER

REFERENCE NUMBER	MFG. CODE	FIGURE & ITEM NO.	REFERENCE NUMBER	MFG. CODE	FIGURE & ITEM NO.	REFERENCE NUMBER	MFG. CODE	FIGURE & ITEM NO.
CMB-783	71744	3 - 20						
CMB-783	71744	3 - 21						
CMB-783	71744	3 - 22						
CMB-783	71744	3 - 23						
CMB-783	71744	3 - 24						
MS25237-327	96906	3 - 1						
MS25237-327	96906	3 - 2						
MS25237-327	96906	3 - 3						
MS25237-327	96906	3 - 4						
MS25237-327	96906	3 - 5						
MS25237-327	96906	3 - 6						
MS25237-327	96906	3 - 7						
MS25237-327	96906	3 - 8						
MS25237-327	96906	3 - 9						
MS25237-327	96906	3 - 10						
MS25237-327	96906	3 - 11						
MS25237-327	96906	3 - 12						
MS25237-327	96906	3 - 13						
MS25237-327	96906	3 - 14						
MS25237-327	96906	3 - 15						
MS25237-327	96906	3 - 16						
MS25237-327	96906	3 - 17						
MS25237-327	96906	3 - 18						
MS91528-1828	96906	3 - 26						
MS91528-1828	96906	4 - 8						
17P45	87034	3 - 25						
237109	06481	1 - 1						
244740	06481	2 - 1						
244741	06481	2 - 2						
244744	06481	4 - 1						
244745	06481	4 - 2						
244746	06481	4 - 3						
244747	06481	4 - 4						
244749	06481	4 - 5						
247300	06481	5 - 15						
247305	06481	5 - 2						
247305	06481	5 - 3						
247310	06481	1 - 3						
247311	06481	4 - 9						
247314	06481	5 - 1						
247321	06481	5 - 12						
247321	06481	5 - 13						
247321	06481	5 - 14						
247326	06481	5 - 8						
247331	06481	5 - 4						
247336	06481	5 - 9						
247342	06481	2 - 3						
247344	06481	2 - 4						
247345	06481	2 - 5						
247346	06481	2 - 6						
247347	06481	2 - 7						
247348	06481	4 - 6						
247349	06481	4 - 7						
247350	06481	1 - 2						
247351	06481	2 - 8						
247354	06481	3 - 27						
247359	06481	3 - 30						
247364	06481	3 - 28						
247373	06481	3 - 29						
247383	06481	3 - 31						
247460	06481	5 - 17						
247470	06481	5 - 16						
247475	06481	5 - 10						
247480	06481	5 - 11						
247485	06481	5 - 5						
247485	06481	5 - 6						
247485	06481	5 - 7						
247640	06481	3 - 32						
5P45TL	87034	3 - 19						

SECTION V. INDEX-REFERENCE DESIGNATION CROSS REFERENCE TO INDEX NUMBER

REFERENCE DESIGNATION	INDEX NO.	REFERENCE DESIGNATION	INDEX NO.	REFERENCE DESIGNATION	INDEX NO.
1	A002				
1A1	A149				
1A1A1	A244				
1A1A2	A331				
1A1A3	A300				
1A1A4	A304				
1A1DS16	A497A				
1A1DS17	A498A				
1A1DS18	A499A				
1A1DS19	A500A				
1A1DS20	A501A				
1A1DS21	A502				
1A1DS22	A503				
1A1DS23	A504				
1A1DS24	A505				
1A1DS25	A506				
1A1DS26	A507				
1A1DS27	A508				
1A1DS28	A509				
1A1DS29	A510				
1A1DS30	A511				
1A1DS31	A512				
1A1DS32	A513				
1A1DS33	A514				
1A1DS34	A515				
1A1DS35	A516				
1A1DS36	A517				
1A1DS37	A518				
1A1DS38	A519				
1A1NP3	A170				
1A1NP12	A496				
1A1NP13	A520				
1A1NP18	A520A				
1A1PS1	A559				
1N1	A003				
1N2	A018				
1N3	A036				
1N4	A051				
1N9	A069				
1N11	A088M				
1N12	A115				
2	A645				
2A1	A988				
2A1A1	B222				
2A1A2	B174				
2A1A3	B198				
2A1A4	B390				
2A1A5	B572				
2A1A6	B597				
2A1A7	B622				
2A1A8	B358				
2A1A9	B411				
2A1A10	B516				
2A1A11	B551				
2A1A12	B250				
2A1A13	B286				
2A1A14	B322				
2A1A15	B151				
2A1A16	B481				
2A1A17	B431				
2A1NP18	B771				
2N5	A846				
2N6	A865				
2N7	A880				
2N8	A907				
2N10	A926				
2N13	A946				
2N14	A963				

SECTION V. INDEX — FEDERAL STOCK NUMBER CROSS-REFERENCE TO FIGURE AND ITEM NUMBER

STOCK NUMBER	FIGURE & ITEM NO.	STOCK NUMBER	FIGURE & ITEM NO.	STOCK NUMBER	FIGURE & ITEM NO.
5355-751-7597	3 - 26				
5355-751-7597	4 - 8				
5995	2 - 2				
6210	3 - 19				
6210	3 - 25				
6240-132-4011	3 - 20				
6240-132-4011	3 - 21				
6240-132-4011	3 - 22				
6240-132-4011	3 - 23				
6240-132-4011	3 - 24				
6240-155-7836	3 - 1				
6240-155-7836	3 - 2				
6240-155-7836	3 - 3				
6240-155-7836	3 - 4				
6240-155-7836	3 - 5				
6240-155-7836	3 - 6				
6240-155-7836	3 - 7				
6240-155-7836	3 - 8				
6240-155-7836	3 - 9				
6240-155-7836	3 - 10				
6240-155-7836	3 - 11				
6240-155-7836	3 - 12				
6240-155-7836	3 - 13				
6240-155-7836	3 - 14				
6240-155-7836	3 - 15				
6240-155-7836	3 - 16				
6240-155-7836	3 - 17				
6240-155-7836	3 - 18				
6625	2 - 8				
6625	3 - 27				
6625	3 - 28				
6625	3 - 29				
6625	3 - 30				
6625	3 - 31				
6625	3 - 32				
6625	4 - 9				
6625	5 - 1				
6625	5 - 2				
6625	5 - 3				
6625	5 - 4				
6625	5 - 5				
6625	5 - 6				
6625	5 - 7				
6625	5 - 8				
6625	5 - 9				
6625	5 - 10				
6625	5 - 11				
6625	5 - 12				
6625	5 - 13				
6625	5 - 14				
6625	5 - 15				
6625	5 - 16				
6625	5 - 17				
6625-234-6151	1 - 2				
6625-234-6153	2 - 3				
6625-234-6157	2 - 5				
6625-245-1650	4 - 4				
6625-245-1735	4 - 2				
6625-245-1736	4 - 1				
6625-245-1737	4 - 3				
6625-245-1739	2 - 1				
6625-245-1745	2 - 6				
6625-245-8471	4 - 6				
6625-245-8479	4 - 7				
6625-404-3201	1 - 1				
6625-410-9914	4 - 5				
6625-411-5826	2 - 7				
6625-411-5830	1 - 3				
6625-463-4691	2 - 4				

SECTION V. INDEX-FIGURE AND ITEM NUMBER CROSS REFERENCE TO INDEX NUMBER

FIG. NO.	ITEM NO. OR REFERENCE DESIGNATION	INDEX NO.	FIG. NO.	ITEM NO OR REFERENCE DESIGNATION	INDEX NO.
1	1	A001			
1	2	A002			
1	3	A045			
2	1	A003			
2	2	A018			
2	3	A036			
2	4	A051			
2	5	A069			
2	6	A088M			
2	7	A115			
2	8	A149			
3	1	A502			
3	2	A503			
3	3	A504			
3	4	A505			
3	5	A506			
3	6	A507			
3	7	A508			
3	8	A509			
3	9	A510			
3	10	A511			
3	11	A512			
3	12	A513			
3	13	A514			
3	14	A515			
3	15	A516			
3	16	A517			
3	17	A518			
3	18	A519			
3	19	A520			
3	20	A497A			
3	21	A498A			
3	22	A499A			
3	23	A500A			
3	24	A501A			
3	25	A520A			
3	26	A496			
3	27	A244			
3	28	A331			
3	29	A368			
3	30	A304			
3	31	A170			
3	32	A559			
4	1	A846			
4	2	A865			
4	3	A880			
4	4	A907			
4	5	A926			
4	6	A946			
4	7	A963			
4	8	B771			
4	9	A988			
5	1	B222			
5	2	B174			
5	3	B198			
5	4	B390			
5	5	B572			
5	6	B597			
5	7	B622			
5	8	B398			
5	9	B411			
5	10	B516			
5	11	B551			
5	12	B250			
5	13	B286			
5	14	B322			
5	15	B151			
5	16	B481			
5	17	B431			

By the Order of the Secretary of the Army:

Official:

**VERNE L. BOWERS,**  
*Major General, United States Army,*  
*The Adjutant General.*

**W. C. WESTMORELAND,**  
*General, United States Army,*  
*Chief of Staff.*

Distribution:

To be distributed in accordance with DA Form 12-31, direct and general support maintenance requirements for the OV-1D and U-21 aircraft.

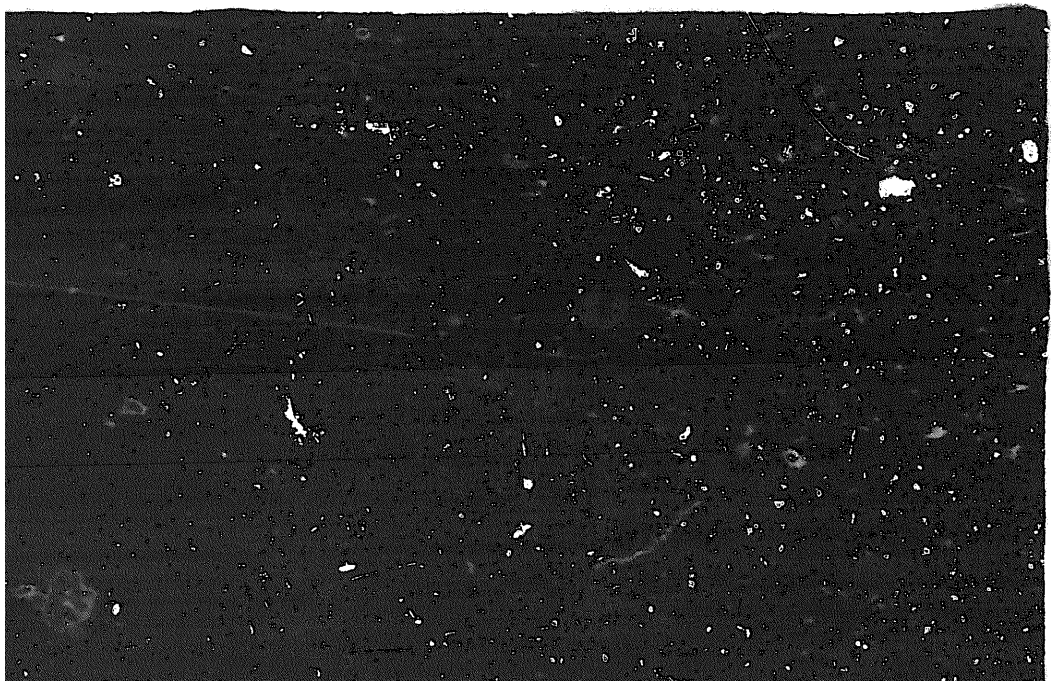


**END**

**12-25-82**

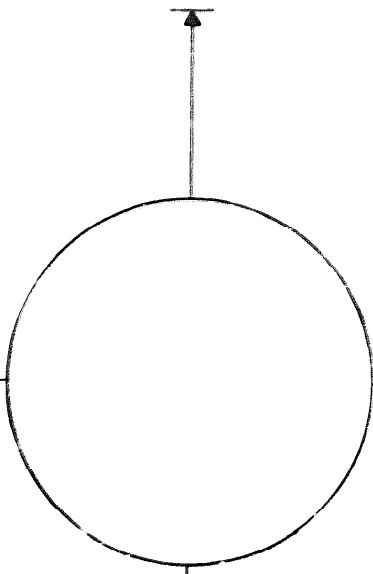
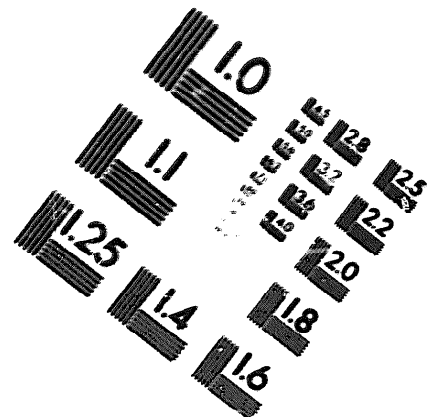
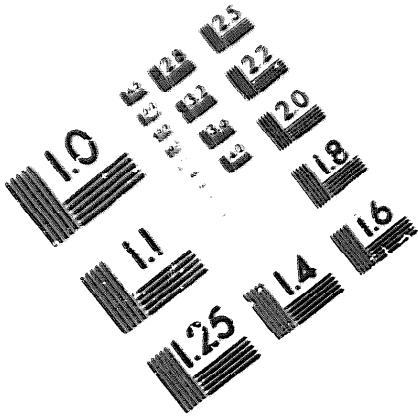
**DATE**





DEPARTMENT OF THE ARMY

MICROFORM TEST TARGET



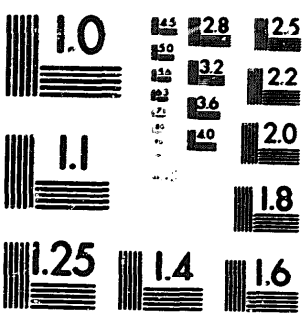
150 MM

1.0 mm (e= 0.1 mm)  
ABCDEFGHIJKLMNPOQRSTUVWXYZ1234567890  
abcdefghijklmnopqrstuvwxyz\$%&' /%# 1/2 1/4 3/4 ---+ x&@\*

1.5 mm (e= 1.09 mm)  
ABCDEFGHIJKLMNPOQRSTUVWXYZ1234567890  
abcdefghijklmnopqrstuvwxyz\$%&' /%# 1/2 1/4 3/4 ---+ x&@\*

2.0 mm (e= 1.37 mm)  
ABCDEFGHIJKLMNPOQRSTUVWXYZ1234567890  
abcdefghijklmnopqrstuvwxyz\$%&' /%# 1/2 1/4 3/4 ---+ x&@\*

2.5 mm (e= 1.77 mm)  
ABCDEFGHIJKLMNPOQRSTUVWXYZ  
abcdefghijklmnopqrstuvwxyz  
1234567890\$%&' /%# 1/2 1/4 3/4 ---+ x&@\*

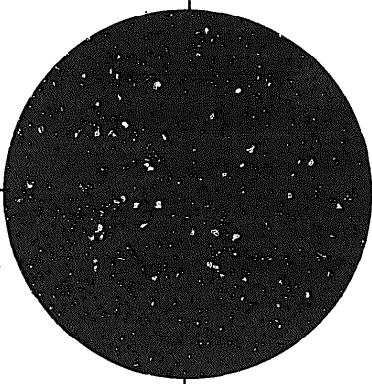


1.0 mm (e= 0.1 mm)  
ABCDEFGHIJKLMNPOQRSTUVWXYZ1234567890  
abcdefghijklmnopqrstuvwxyz\$%&' /%# 1/2 1/4 3/4 ---+ x&@\*

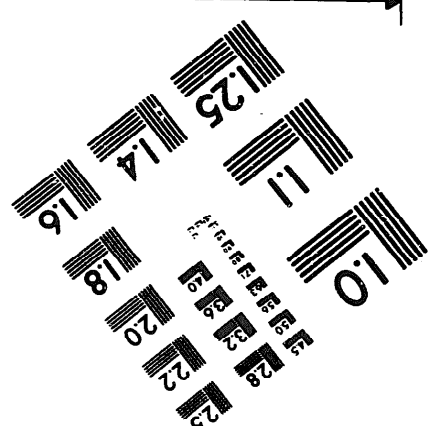
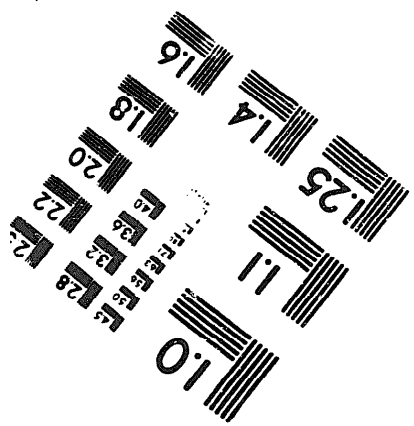
1.5 mm (e= 1.09 mm)  
ABCDEFGHIJKLMNPOQRSTUVWXYZ1234567890  
abcdefghijklmnopqrstuvwxyz\$%&' /%# 1/2 1/4 3/4 ---+ x&@\*

2.0 mm (e= 1.37 mm)  
ABCDEFGHIJKLMNPOQRSTUVWXYZ  
abcdefghijklmnopqrstuvwxyz  
1234567890\$%&' /%# 1/2 1/4 3/4 ---+ x&@\*

2.5 mm (e= 1.77 mm)  
ABCDEFGHIJKLMNPOQRSTUVWXYZ  
abcdefghijklmnopqrstuvwxyz  
1234567890\$%&' /%# 1/2 1/4 3/4 ---+ x&@\*



200 MM



250 MM